

# SAP 50 GENERAL INFORMATION

## Technical data

### Air breathers & Filler plugs

#### Nylon air breather filter

#### Flow rate up to 200 l/min

SAP50 is a range of compact plastic air breathers for protection of the tank against the solid contamination contained into the air.

The integrated air breather protects the tank against the solid contamination contained into the air. They are usually directly fitted on the tank.

#### Available features:

- Male threaded connections up to 3/4", for a maximum flow rate of 200 l/min.
- Fine cellulose filtration, to get a good cleanliness level into the reservoir.

#### Common applications:

- Compact hydraulic systems
- Compact mobile machines
- Industrial equipment

#### Flow rate $\Delta p$ 0.02 bar

	Flow rate [l/min]	
	Filtration rating	
<b>SAP50</b>	03	10
	180	204

#### Materials

- Cover/Connection: Nylon
- Filter element: Resin impregnate paper, Polyurethane
- Pressurization valve: Nylon, Galvanized steel, NBR
- Seals: NBR

#### Temperature

From -25 °C to +100 °C

#### Weight

0.40 kg

#### Quantity

10 pcs/pack



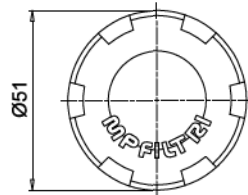
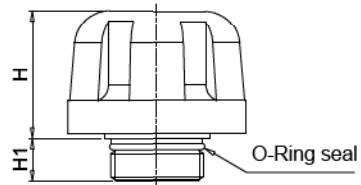
## Designation & Ordering code

### COMPLETE AIR BREATHER - SAP50

Series and size	Configuration example :						
<b>SAP50</b> Nylon air filter	SAP50	G3	L03	A	1	0	P01
<b>Connections to the tank</b>							
<b>G1</b> G 1/4"							
<b>G2</b> G 3/8"							
<b>G3</b> G 1/2"							
<b>G4</b> G 3/4"							
<b>G9</b> SAE 6 - 9/16" - 18 UNF							
<b>G10</b> SAE 12 - 1 1/16" - 12 UN							
<b>Filtration rating</b>							
<b>L03</b> Resin impregnate paper 3 µm							
<b>L10</b> Polyuretane 10 µm							
<b>Seals</b>							
<b>A</b> NBR							
<b>Valve</b>	Connection						
	G1	G2	G3	G4	G9	G10	
<b>0</b> Without valve	•	•	•	•	•	•	
<b>1</b> 0.5 bar pressurization valve		•	•	•		•	
<b>Basket</b>							
<b>0</b> Without basket							
<b>Execution</b>							
<b>P01</b> MP Filtri standard							
<b>Pxx</b> Customized							

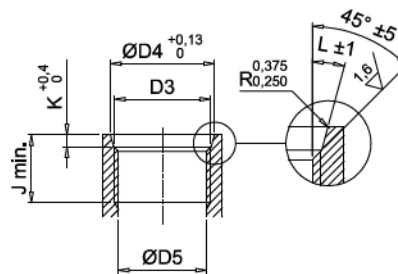
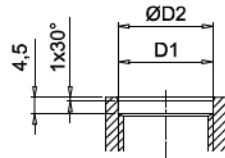
SAP50

Threaded connection



Housing on the tank for connections GAS

Housing on the tank for connections SAE



Connections	H [mm]	H1 [mm]	D1 [mm]	ØD2 [mm]	D3 [mm]	ØD4 [mm]	ØD5 [mm]	J min. [mm]	K [mm]	L
<b>G1</b>	36	12	G 1/4"	13.5	-	-	-	-	-	-
<b>G2</b>	36	12	G 3/8"	17	-	-	-	-	-	-
<b>G3</b>	36	12	G 1/2"	21.5	-	-	-	-	-	-
<b>G4</b>	36	12	G 3/4"	26.7	-	-	-	-	-	-
<b>G9</b>	36	12	-	-	SAE 6 - 9/16" - 18 UNF	15.6	13.081 12.751	12.7	2.5	12°
<b>G10</b>	35	14.5	-	-	SAE 12 - 1 1/16" - 12 UN	29.2	24.978 24.696	19	3.3	15°