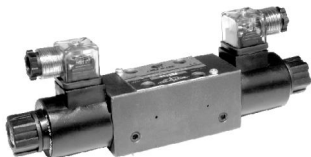


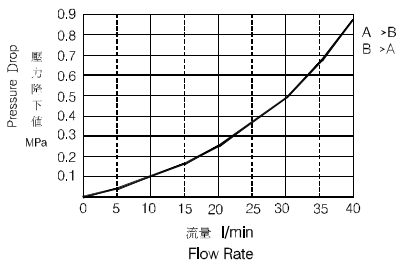
◆ MODEL 型式

LVSH-02G



◆ PERFORMANCE(Cartridge Only)

特性曲線



◆ SPECIFICATIONS 規格

Model Number 型式號碼	Maximum Pressure 最大壓力 bar	Maximum Flow 最大流量 lpm	Weight 重量 Kg
LVSH-02G	315 (4500 psi)	35 (9.25 gpm)	2.4 (5.3 lbs)
Fluid Type 液體型式	ISO VG 32, 46, 68		
Viscosity 黏性 cSt	10~400 (59~1854 SSU)		
Operating Temperature 操作溫度 °C	-15~70 (-5~158 °F)		
Contamination Level 污染標準	ISO4406, 21/19/16 NAS1638,10		
Surface Treatment 表面處理	Zinc Phosphate Compound 鋅磷酸化合物		

◆ All screws with metric measure, if require inch measure, please contact us.

所附螺絲皆為公制標準規格品，若需英制螺絲請另外備註說明。

◆ HOW TO ORDER 編號說明

1	2	3	4	5
LVSH	— 02	G	— **	— 20

1 VALVE SERIES 系列名稱

LVSH= Solenoid Check Valves

2 SUBPLATE MOUNTING SIZE: 插口直徑

02=1/4"(6mm)
ISO CETOP3
DIN NG 6
NFPA D03

3 CONNECTING TYPE 連接型式

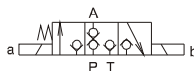
G:TYPE:BASEPLATE MOUNTING TYPE
G: (板式連接)

4 TYPE OF COIL 電磁閥電磁線圈類型

A1 : AC110 60HZ D1 : DC12
A115 : AC115 50HZ D2 : DC24
A230 : AC230 50HZ R1 : RF110 60HZ/50HZ
A2 : AC220 60HZ R2 : RF220 60HZ/50HZ

5 DESIGN NO 設計編號

◆ CONTROL PORT(S) 動作形式



SOLENOID CHECK VALVES

LVSH-02G

電磁止逆閥

◆ DIMENSIONS 外型尺寸圖

LVSH-02G

● Mounting Interface 安裝板圖

ISO 4401-AB-03-4-A

A
LVSH

