

Service Data

Vickers<sup>®</sup>  
**Filters**

---



# **H451 Series High Performance Pressure Filter**

**Flows to 568 L/min (150 USgpm) 310 bar (4500 psi)**

# Service Data

## H451 Series High Performance Pressure Filter

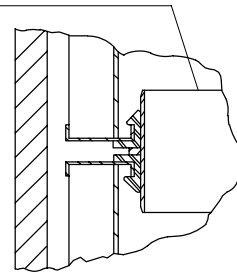
Flows to 568 L/min (150 USgpm) 310 bar (4500 psi)



### CAUTION

Before servicing the element, the bleed plug in filter housing must be loosened to relieve hydraulic pressure. This will minimize fluid overflow.

P-227567-01 Element adapter  
(req'd. when stacking elements)



Cap sub assembly

NOTE: Bowl kits contain Buna-N seals, to order Viton seals, replace **B** in part number with a **V**.

Example:

From: P-133237-03**B**, for Buna.

To: P-133237-03**V**, for Viton.

P-126255-01 Warning decal (use with bypass valve option code 4)  
P-126255-02 Warning decal (use with non-bypass valve option code 1)

Nipple (Non-bypass use with valve option 1)

▲◆♣★ AS568-906 "O"-Ring

▲● AS568-908 "O"-Ring

▲● AS568-014 "O"-Ring

ΔP Indicator  
(See model code)

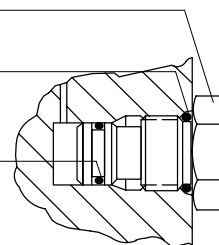
SAE-4 Drain plug

Nameplate & drive screws

P-227533-01 Indicator port plug

▲● AS568-908 "O"-Ring

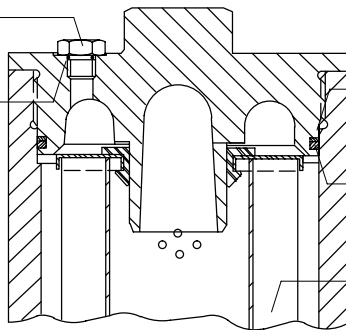
▲● AS568-014 "O"-Ring



- ▲ Included in seal kit P-427466-37 Buna
- Included in seal kit P-427466-39 Viton
- ◆ Included in 9" cylinder kit P-133237-03B
- ♣ Included in 18" cylinder kit P-133237-06B
- ★ Included in 27" cylinder kit P-133237-07B

SAE-4 Bleed plug

▲● AS568-904 "O"-Ring



▲●◆◆★ 245 B.U. Ring

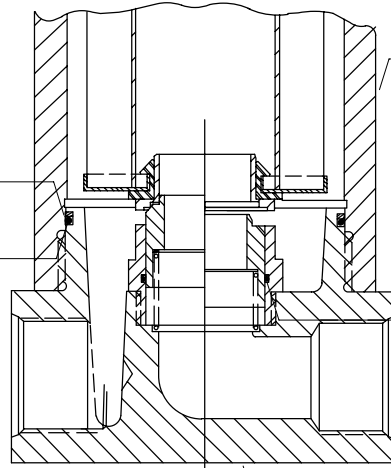
▲●◆◆★ AS568-245 "O"-Ring

Filter element (See model code)

See bowl kit

▲●◆◆★ 245 B.U. Ring

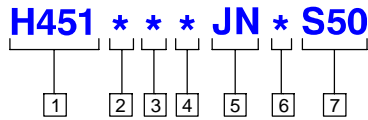
▲●◆◆★ AS568-245 "O"-Ring



▲● AS568-033 "O"-Ring

Head sub assembly (See model code)

# Head Sub Assembly Model Code



**1 Filter series**

**H451**

**2 Element collapse rating**

- 1 – 150 PSID (10 bar)
- 4 – 3000 PSID (210 bar) (H– pak only)

**3 Port option**

- D** – 1.875-12UN SAE-24 str. thd. (1½” tube)
- E** – 1½” SAE 4-bolt split flange Code 61
- R** – 1½” SAE 4-bolt split flange Code 62
- S** – Subplate mounting

**4 Valve option**

- 1 – Non–bypass
- 4 – Bypass set at 50 ± 5 PSID (3,4 bar) cracking pressure
- 6 – Bypass set at 90 ± 10 PSID (6,2 bar) cracking pressure

**5 ΔP indicator & receptacle options**  
**First designator** (Indicator type)

**J** – No ΔP indicator

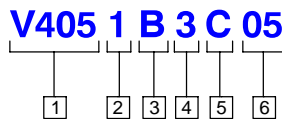
**Second designator** (Electrical receptacle)  
**N** – No receptacle – Use with visual ΔP indicator.

**6 Seal material**

- B** – Buna–N
- V** – Viton–A

**7 S50 Head sub assembly**

# Element Model Code



**1 Filter element**

**V405** – For use with H450 series filters

**2 Element collapse rating**

- 1 – 150 PSID (10 bar)
  - 4 – 3000 PSID (210 bar) (H–pak only)
- NOTE: 1 use only with bypass valve or monitored ΔP indicator

**3 Seal material**

- B** – Buna–N
- V** – Viton–A

**4 Bowl length      Element length**  
**mm (in)              mm (in)**

- 3** – 388,7 (15.3)      229 (9)
  - 6** – 627,9 (24.7)      457 (18)
  - 7** – 863,6 (34.0)      686 (27)
- All meet HF4 specifications.

**5 Element construction**

- C** – C–pak (grade 01, 3, 5, 10, 20)
- H** – H–pak (grade 3, 10)
- E** – E–pak (grade 3, 5, 10)

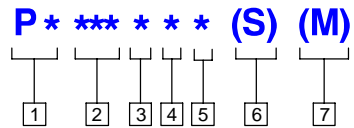
**6 Fluid cleanliness ratings**

Code	Fluid cleanliness level
<b>03</b>	<b>16/14/12</b> or better
<b>05</b>	<b>18/16/14</b> or better
<b>10</b>	<b>20/18/15</b> or better
<b>20</b>	<b>22/19/16</b> or better

The table above assumes limited ingress and a single pass of pump flow through the element. For more detailed information, please consult Vickers Guide to Systemic Contamination Control **561** or contact your local Vickers Distributor.

# Differential Pressure Indicator Model Code

---



---

## 1 Style option

**PV** – Visual  
**PE** – Electrical  
**PD** – Electrical/Visual

---

## 2 Actuation pressure option

**015** –  $15 \pm 4$  PSID (1 bar)  
**035** –  $35 \pm 5$  PSID (2,4 bar)  
**070** –  $70 \pm 7$  PSID (4,8 bar)  
(not an option with 330/340 filters)  
**100** –  $100 \pm 12$  PSID (6,9 bar)

---

## 3 Thermal lockout option

**N** – No thermal lockout  
(not an option with IFI indicator)  
**T** – Thermal lockout  
(standard TLO= $80 \pm 20^\circ$  F)

---

## 4 Seal option

**1** – Buna-N  
**2** – Viton

---

## 5 Receptacle option

**B** – 5-pin Brad Harrison (41512)  
(not an option with visual indicator)  
**H** – Hirschman (DIN 43650)  
(not an option with visual indicator)  
**N** – No receptacle (use with visual indicator)  
(not an option with IFI indicator)

---

## 6 Surge control option

**None** – No surge control  
**S** – Surge control  
(not an option with 330/340 filters)

---

## 7 Filter series option

**None** – Standard  
**M** – 330/340 Filters only

**Eaton**  
Fluid Power Group  
Hydraulics Business USA  
14615 Lone Oak Road  
Eden Prairie, MN 55344  
USA  
Tel: 952-937-9800  
Fax: 952-294-7722  
[www.eaton.com/hydraulics](http://www.eaton.com/hydraulics)

**Eaton**  
Fluid Power Group  
Hydraulics Business Europe  
Route de la Longeraie 7  
1110 Morges  
Switzerland  
Tel: +41 (0) 21 811 4600  
Fax: +41 (0) 21 811 4601

**Eaton**  
Fluid Power Group  
Hydraulics Business Asia Pacific  
11th Floor Hong Kong New World Tower  
300 Huaihai Zhong Road  
Shanghai 200021  
China  
Tel: 86-21-6387-9988  
Fax: 86-21-6335-3912